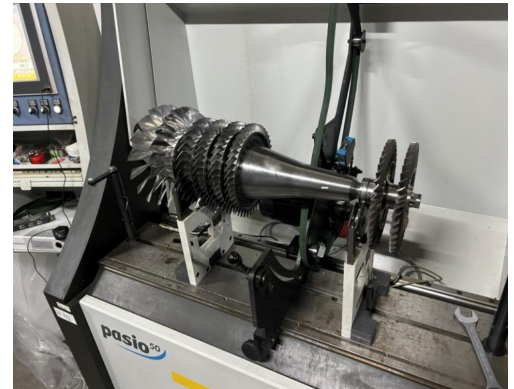


TURBOFAN 400 ENGINE

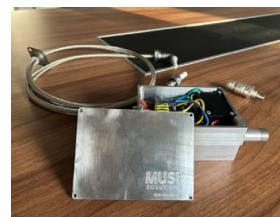
Engine

Specification of Engine TurboFan 400 :

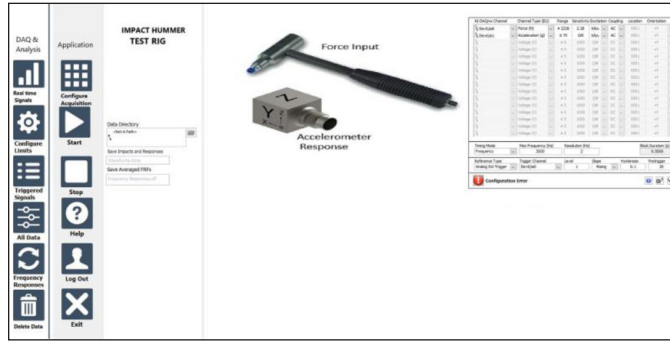
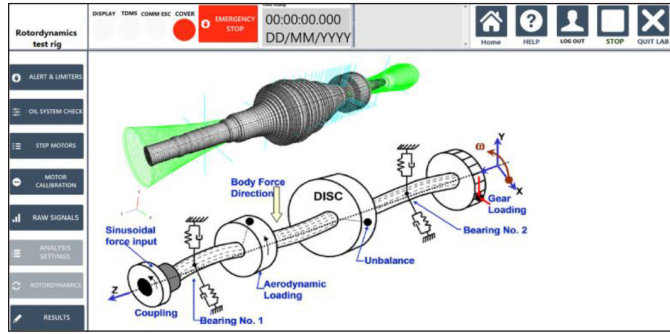
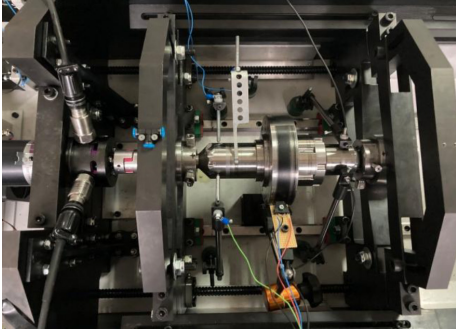
- Thrust of engine 400daN (400kg)
- Specific fuel consumption 0,85 (kg/da N/h)
- Length of engine 1100 mm
- Max diameter of engine 330 mm
- Weight of the engine (dry engine) 76 kg
- Bypass rate 0,65
- Pressure ratio for four stage compressor 3,52
- Pressure ration for two stage fan 1.71
- Max temperature in front of turbine 1150 K
- Max intake mach number 0,9 m
- Starting of the engine Windmill in flight, compressed air on ground
- Electrical spurk plug
- Generator of 3kw continous and 4kw in peak
- Max rpm of engine 30400 rpm
- Lubrication Oil mist 3% oil mixed with fuel
- Max operational height 10000 m
- Max starting height 5000 m
- Max mass flow of air 10.6 kg/s
- Max mass flow of fuel 0.11 kg/s
- Number of starts 100
- Working hours 50 h
- STM32 cortex m4 based control of engine (automatic control)
- Defining the limiters (Temperature in front of turbine, flameout limit for combustion chamber, max and min rpm of the engine)
- GUI (STM32 based with 7inch monitor)
 - Manual mode
 - Automatic mode
 - Testing subsystems
 - Parameters settings
 - Procedures settings
 - Limiters and alerts settings
 - Monitoring of engine (how many starts, how many shut down, how many hours is working and etc.)
 - Data logging
 - Telemetry function
 - Error handlers
- Envelope prescribed (acceleration and decelerations procedures depending of Height and mach number)
- All subsystems are connected on the envelope of the engine



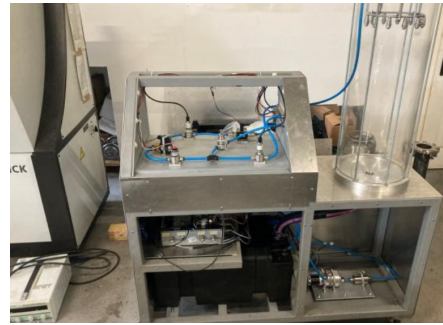
MTF400



Rotordynamics test rig



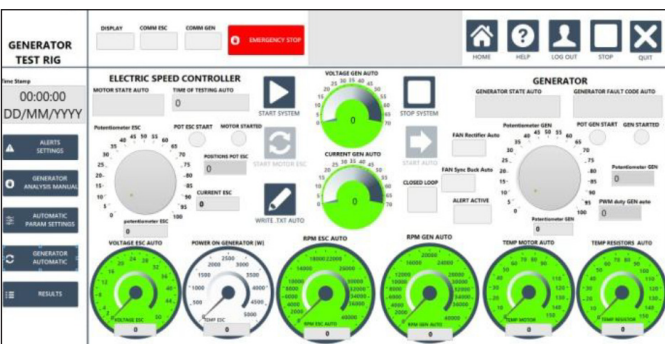
Fuel System test rig



Combustion chamber test rig



Generator test rig



Should you have any further enquires, please do not hesitate to contact us at office@yugoimport.com
 All the data given in the brochure are for information purposes only. The final configuration and/or technical specification are defined for each contract individually.